

PERFECT FOR ELECTRICIANS AND INSTALLERS

In fact anyone who requires Equipment to be installed above the Ceiling Space will find it is extremely easy to attach the Junior Equipment Enclosure to any Unistrut® type Channel/Unistrut or to any 1 1/2" dia Pole.



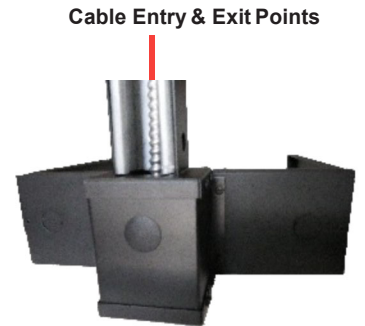
Generous Sized Interior
Internal Size: 12" w x 10" d x 3 1/2" h

ALL CABLES CAN ALWAYS BE HIDDEN

Cable and Wiring can be run inside the Channel, Pole or Conduit points straight into the Junior Plenum Enclosure's Entry/Exit Ports

EASY ACCESS TO THE INTERIOR AT ANY TIME

Both the Cover and Front Panel can be removed at any time for easy access to the interior



ROUTING POWER & DATA CABLES

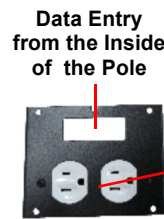
The Preferred method is to run all Power and Data Cables inside the Pipe or Unistrut Channel

Rear View of Junior Plenum Equipment Box with Double Pole Mount Fitting

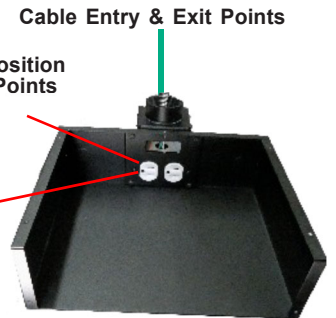


All Plenum Boxes come with Alternate Conduit Access Points

New Space saving Data/ Power Panel allow both Data and Power to enter the Enclosure without being seen



Built In 2 Position AC Power Points

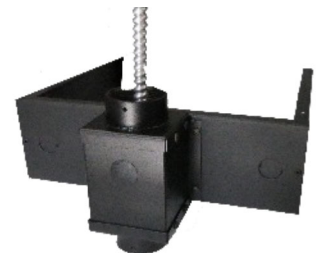


The Top Half of the Unistrut® Mounting Bracket accepts ANY Standard 1 5/8" Channel or Strut while the lower section accepts a 1-1/2" Pole allowing attachment to a Projector or other Pole Equipment



Pole Mount Version Junior Plenum Equipment Enclosure

The Double Pole Mount Fitting allows easy connection to a Projector or other Pole Mounting Device using (1) Upper 1 1/2" dia Pole and (1) Lower Pole



PART #	Description	List Price
NB-JEE-USPM	Junior Plenum Equipment Enclosure with Upper Unistrut/Lower Pole Mount Fitting	\$333.95
NB-JEE-DPM	Junior Plenum Equipment Enclosure with Double Pole Mount Fitting	\$333.95



An original Nigel B Design
Exclusively manufactured in the USA by: